

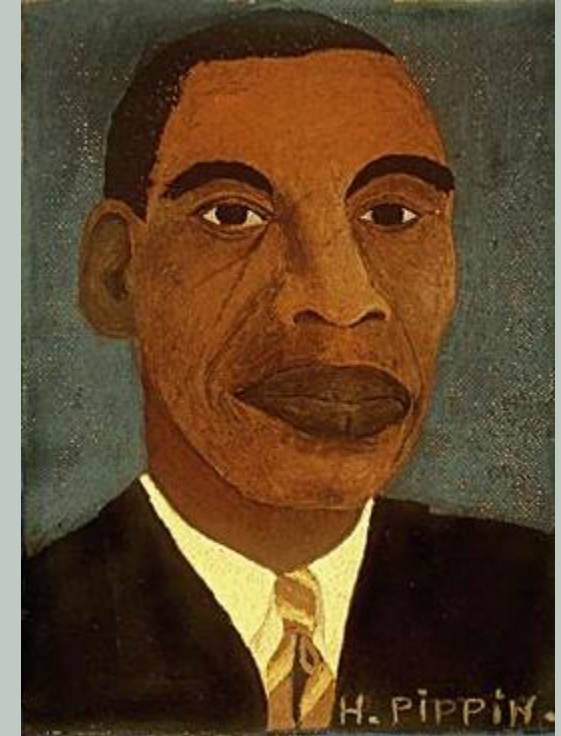
---

# Longing to live on the Holy Mountain

Isaiah's dream in  
the life and art  
of



Edward Hicks



Horace Pippin

# Agenda



- Introduction
- Isaiah
- Edward Hicks
- Horace Pippin
- What can you say?

## References

- Wiki
- Art and Faith Matter
- Sothebys.com



# Isaiah

Isaiah as "the prophet" who lived late 600's to mid 700's before the common era.

He lived and prophesized during a time when Judah was under constant threat, invasion and siege from Assyria .

Isaiah told the people not to forsake God, and warned Israel to cease from its persistent sin and disobedience

The Talmud says that he died a painful death of being sawn in half as he hid in a tree because he called out the sins of the people saying : "I dwell in the midst of people of unclean lips" [Jerusalem Talmud](#)



manuscript illumination  
from *The Siegburg  
Lectionary*, 12th century.  
The British Library (Public  
Domain)





Isaiah  
11:6-11



The wolf will live with the lamb, the leopard will lie down with the goat, the calf and the lion and the yearling together; and a little child will lead them.

The cow will feed with the bear, their young will lie down together, and the lion will eat straw like the ox.

The infant will play near the cobra's den, and the young child will put its hand into the viper's nest.

They will neither harm nor destroy on all my holy mountain, for the earth will be filled with the knowledge of the LORD as the waters cover the sea.



## Edward Hicks 1780 to 1849

- Born after the revolution, he saw a country and his Society of Friends steadily moving away from Isaiah's vision of the Holy Mountain.
  - The splintering of the Society of Friends – Orthodox – Hicksite
  - The lost vision of Penn to have peace and harmony with the Lenape Nation
  - The steady march towards civil war driven by the enslavement of Africans and American Indians
- Edward painted more than 60 peaceable kingdom paintings starting in 1815
- As a recorded and traveling minister of the Society of Friends he continued to lift up to Friends and non-Friends that we are called to the creation of the Peaceable Kingdom "here on earth as it is in Heaven".
- The composition of his paintings changed over time reflecting his experience of the world moving away from Isaiah's vision.



- His early paintings show a linkage between the Holy Mountain and our lives
  - The use of Virginia's Natural Bridge connects two sides of the painting
  - There is no chasm or change in height between the world and the Kingdom
  - A sense that the animals are living in peace
  - Penn's treaty with the Lenape occurring as a natural part of the landscape
  - The animals are drowsily laying about
  - Animals look cuddly
  - The child is the same height as the lion



The wolf also shall dwell with the lamb & leopard shall lie down with the kid; & the calf & the young lion & the fatling together; and a little child shall lead them.





The wolf did with the lambkin dwell in peace,  
His grim carniv'rous nature there did cease;



The lion with the fatling on did move,  
A little child was leading them in love;





As Edward ages, the world continues to drift farther from the Holy Mountain. This drift is reflected in:



- The distance between the world and the Kingdom increases
- A chasm appearing separating the two. This chasm grows with succeeding paintings
- Animals become more aggressive
  - The lion's and leopard's teeth are visible in some versions
  - Animals become more tense
    - Their eyes focus on the viewer



Note:

Chasm appears

Animals are  
alert, not sleepy  
and cuddly

Eyes of animals  
show  
bewilderment





Note:  
People become  
small both  
those with the  
animals and  
those farther  
away

Animals are  
standing and  
alert

Mouths open  
and Teeth are  
showing, ready  
for.....  
Has the  
Kingdom been  
lost?





# Horace Pippin 1888 – 1946

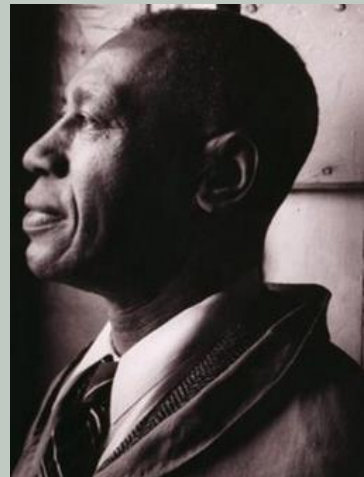


Horace grew up in West Chester, and went to segregated schools, worked as a laborer, porter, and in an iron foundry.

He began drawing as a child. Enjoyed drawing horses at the local racetrack.

In World War I served in a Black infantry unit known for its bravery. He was shot 3 times, damaged his right shoulder, requiring years to recover. He received his purple heart belatedly in 1945.

With the horrors of war in his head and heart, Horace returned to a segregated America where violence and prejudice daily impacted his family here in NJ and Chester County PA.





Horace worked various jobs as his arm would allow. He began painting after his return and drew the attention of the art community in Chester County and Philadelphia – ie Wyeth and Carlen Barnes .... His first paintings were of the war, religious subjects, historical events, local people and area.





During the final years of World War II, Horace painted the *Holy Mountain* series. The paintings were inspired by Isaiah's Peaceable Kingdom and his own life experience.

At the center of the painting a Sheppard (perhaps himself) is surrounded by children and Isaiah's animals in a peaceful meadow, in the dark background soldiers sneak through the forest towards a cemetery. In *Holy Mountain-3* a lynching victim is hanging from a tree.



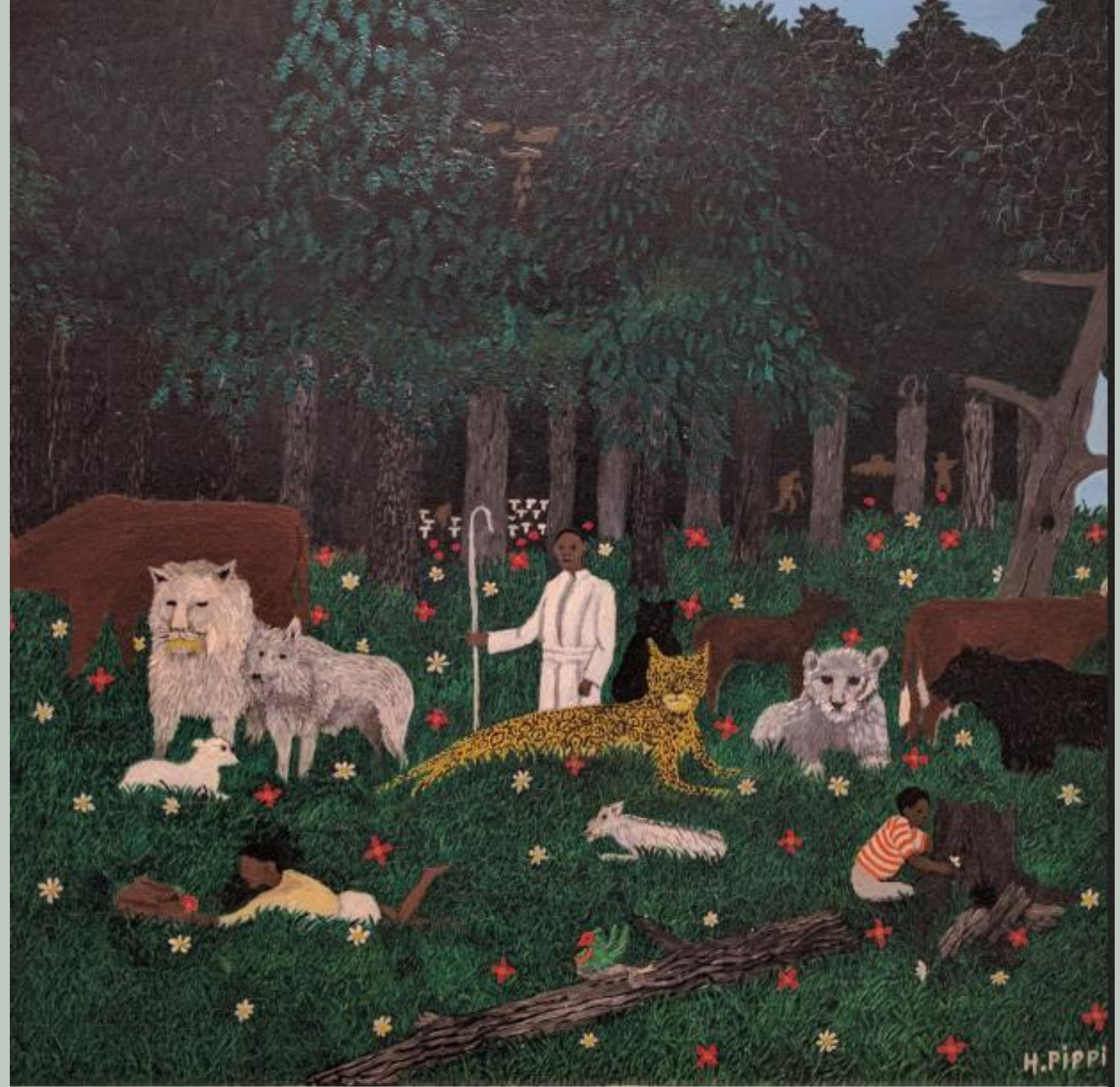
## Holy Mountain I

Note:

The contrast between the  
foreground meadow and  
the forest

The soldiers in the forest  
The cemetery in the forest

How the children are  
oblivious to the danger  
behind them





## Holy Mountain II

### Note

How much darker  
this painting is

How small the  
meadow is





## Holy Mountain III

Note  
The return of the  
meadow

The addition of  
the lyching





## Holy Mountain iv

### Note

This is an unfinished painting at the end of Horace's life

The forest has been replaced by a mountain that is far from the animals

The tree may be dead







Horace said:

Holy Mountain came to my mind because the whole world is in such trouble, and in reading the Bible (Book of Isaiah XI:6) it says that there will be peace in the land. If a man knows nothing but hard times he will paint them, for he must be true to himself, but even that man may have a dream, an ideal—and *Holy Mountain* is my answer to such painting“

**What can you say?**

How do you hold on to the “dream .. Ideal” of a Holy Mountain?

How are you lead to decrease the chasm that lays between our lives and the Peaceable Kingdom?